



PRODUCT CATALOGUE

2024



TABLE OF CONTENT

SHRIMP	01
Black Tiger Vannamei Shrimp Red Sea Prawn Others	

FISH	02
Toothfish Pangasius Salmon Red Drum Others	

MOLLUSC	03
Scallop Clam Oyster Others	

CRUSTACEAN	04
Crab Meat	

CEPHALOPOD	05
Cuttlefish	

VALUE - ADDED	06
Kabayaki Broth & Oil	

FUNCTIONAL FOOD	07
Bird's Nest Chicken Essence Milkfish Essence Drinks	

EMBRACING *Sustainability*

We are dedicated to offering responsibly sourced seafood and are actively working towards full sustainability in our product range:

- We are MSC and ASC certified. Look for the ASC logo and MSC ecolabel
- We are continuously expanding our selection of certified sustainable options
- Our goal is to protect marine ecosystems and support responsible fishing practices
- We are committed to improving traceability and promoting sustainable methods

By choosing our products, you're supporting our journey towards a more sustainable seafood industry.



ASC-C-01014

ASC certified as responsibly farmed. www.asc-aqua.org



MSC-C-55122

From an MSC certified sustainable fishery. www.msc.org



SHRIMP

Black Tiger
Vannamei Shrimp
Red Sea Prawn
Others



BLACK TIGER PRAWN



Raw Head On Shell On Black Tiger Prawn

Scientific Name: *Penaeus Monodon*

Type: Frozen

Packaging: Semi-IQF, 10 x 1kg

Size(s): 4/6 - 31/40 pcs/box

Origin: Asia

RAW



Raw Peeled Tail Off Butterfly Cut Black Tiger Prawn

Scientific Name: *Penaeus Monodon*

Type: Frozen

Packaging: IQF, 10 x 1kg

Size(s): 8/12 - 41/50 pcs/lb

Origin: Asia

Sourced from the waters of Asia, Tiger Prawns are characteristically bold with a firm and noticeable 'snappy' texture. These prawns offer a succulent bite and a sweeter, richer taste compared to other shrimp varieties. They are quickly frozen to ensure maximum freshness. They are perfect for grilling, steaming, or baking. Enjoy the deliciousness of Tiger Prawns in your favorite dishes!



Raw Peeled Tail On Black Tiger Prawn

Scientific Name: *Penaeus Monodon*

Type: Frozen

Packaging: IQF, 10 x 1kg

Size(s): 8/12 - 71/90 pcs/lb

Origin: Asia



Raw Peeled Tail Off Black Tiger Prawn

Scientific Name: *Penaeus Monodon*

Type: Frozen

Packaging: IQF, 10 x 1kg

Size(s): 8/12 - 71/90 pcs/lb

Origin: Asia



**Cooked Head On Shell On
Vannamei Shrimp**

Scientific Name: Litopenaeus Vannamei

Type: Frozen

Packaging: Semi-IQF, 10 x 1kg

Size(s): 26/30 - 51/60 pcs/kg

Origin: Asia



VANNAMEI SHRIMP



VANNAMEI SHRIMP



Raw Peeled Tail Off Vannamei Shrimp Meat

Scientific Name: Litopenaeus Vannamei

Type: Frozen

Packaging: IQF, 10 x 1kg

Size(s): 8/12 - 100/200 pcs/lb

Origin: Asia

RAW



Raw Peeled Tail On Vannamei Shrimp Meat

Scientific Name: Litopenaeus Vannamei

Type: Frozen

Packaging: IQF, 10 x 1kg

Size(s): 8/12 - 100/200 pcs/lb

Origin: Asia



Raw Peeled Tail Off Butterfly Cut Vannamei Shrimp

Scientific Name: Litopenaeus Vannamei

Type: Frozen

Packaging: IQF, 10 x 1kg

Size(s): 8/12 - 41/50 pcs/lb

Origin: Asia



Raw Peeled Tail Off Vannamei Shrimp

Scientific Name: Litopenaeus Vannamei

Type: Frozen

Packaging: 20 x 500g

Size(s): 31/40 - 71/90 pcs/lb

Origin: Asia



Raw Head On Shell On Red Sea Prawn

Scientific Name: *Litopenaeus Vannamei*

Type: Frozen

Packaging: Semi-IQF, 6 x 2kg

Size(s): 30/40 - 50/60 pcs/kg

Origin: Saudi Arabia

RED SEA PRAWN

Our vertically integrated, non-intensive shrimp cultivation utilizes clean, pristine sea water fed directly from Red Sea and benefits from unique desert conditions and high saline environmental conditions, giving our prawns superior quality and delectable flavour.

Our prawns are now certified sustainable by the Aquaculture Stewardship Council.

DRIED SAKURA SHRIMP



Also known also as Cherry Blossom Shrimp as they have a similar colour to cherry blossoms. Caught from deep sea in Taiwan, one of two places in the world where the species are found. Only whole, sashimi-grade Sakura Ebi is selected for processing.

Using Low Temperature Drying, our Sakura Ebi is placed in a machine to be gently dried. Low Temperature Drying can better preserve the aroma, colour and natural sweetness of Sakura Ebi as compared to traditional outdoor drying and heated-air drying. Our Sakura Shrimp is produced in a controlled environment and so the hygiene standard is well controlled as compared to outdoor drying.

These deliciously sweet Sakura Ebi has a light crispy texture, and is suited for a variety of cuisines. They can be added to your pasta, salad and fried rice. A natural food source with high nutrition value and calcium content. Adds colour to enhance visual appeal.

Sakura Ebi

Scientific Name: Lucensosergia Lucens

Type: Dried

Packaging: 36 x 100g

Size(s): -

Origin: Taiwan



FISH

- Toothfish
- Pangasius
- Salmon
- Red Drum
- Others

TOOTHFISH



Headless Gutted Chilean Seabass

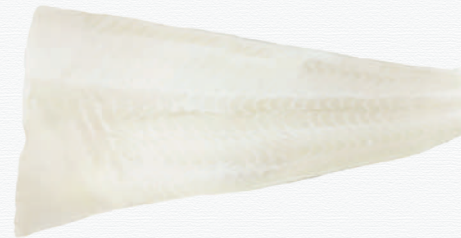
Scientific Name: Dissostichus Eleginoides

Type: Frozen

Packaging: IWP

Size(s): 2/3, 3/4, 4/6, 6/8 kgs/pcs

Origin: France, UK



Cod Seabass Fillet

Scientific Name: Dissostichus Eleginoides

Type: Frozen

Packaging: IVP

Size(s): 1/2, 2/3, 3/4, 4/6 kgs/pc

Origin: France, UK



PANGASIOUS



Whole Pangasius Butterfly Cut

Scientific Name: Pangasius Hypophthalmus

Type: Frozen

Packaging: IVP, 10kg

Size(s): 500/650 grs/pc

Origin: Vietnam



Sutchi Fillet

Scientific Name: Pangasius Hypophthalmus

Type: Frozen

Packaging: IQF, 6.25kg

Size(s): 170/220, 220/270, 300/Up grs/pc

Origin: Vietnam



Whole Guttred Pangasius

Scientific Name: Pangasius Hypophthalmus

Type: Frozen

Packaging: IWP, 10kg

Size(s): 800/1000 grs/pc

Origin: Vietnam





Salmon Sliced (Ready-to-Eat)

Scientific Name: Salmo Salar

Type: Frozen

Packaging: 80g

Size(s): 7/9 g/pc

Origin: Norway



Smoked Salmon Sliced

Scientific Name: Salmo Salar

Type: Frozen

Packaging: 70g

Size(s): 6/8 g/pc

Origin: Norway



Smoked Salmon Trout Sliced

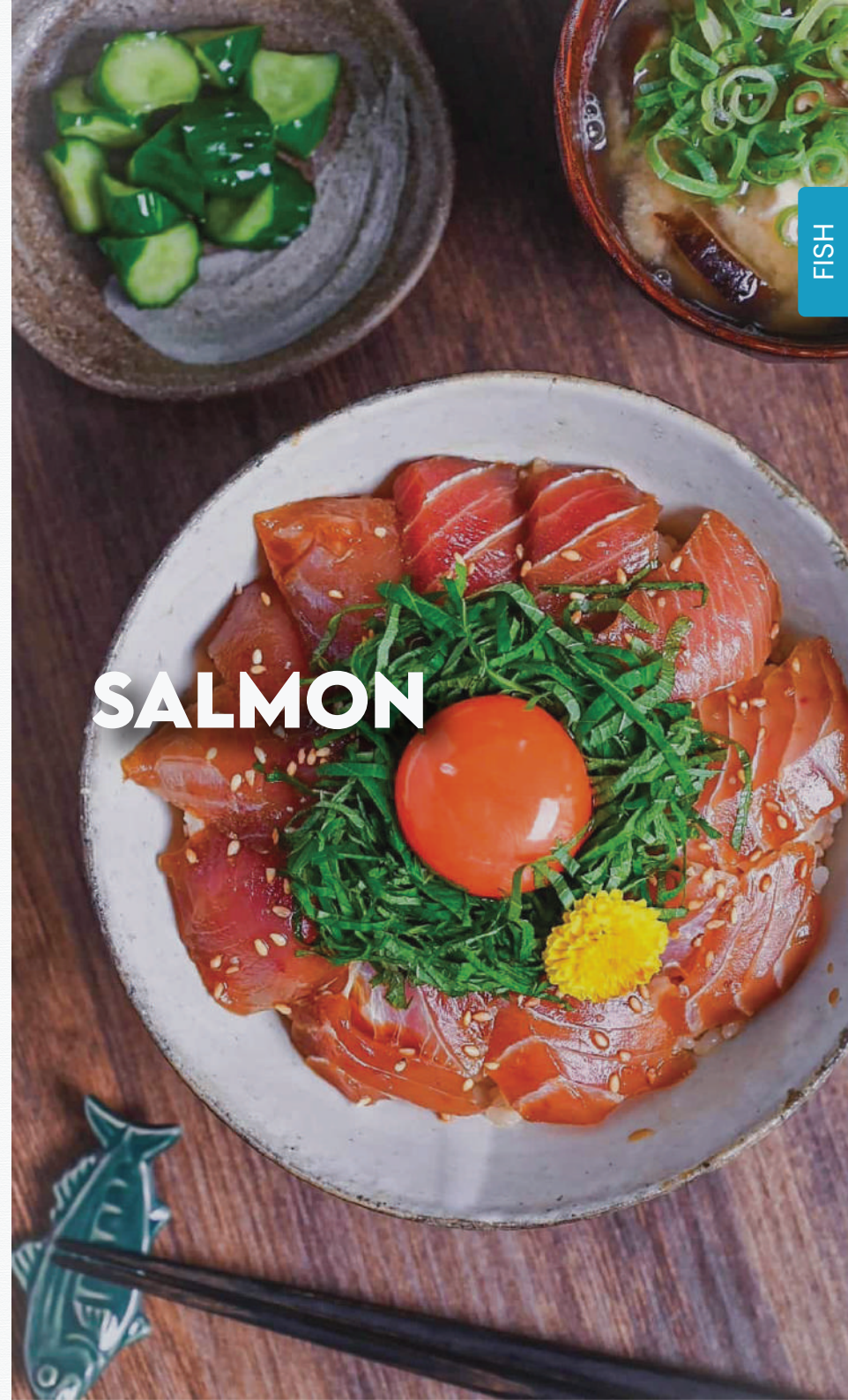
Scientific Name: Onocorhynchus Mykiss

Type: Frozen

Packaging: 70g

Size(s): 6/8 g/pc

Origin: Norway



RED DRUM



Firm white flesh with delicate flavor. A versatile fish suitable for all preparations both raw and cooked. Can be grilled, braised, fried or used in hotpot.

The black spot on the tail is a distinguishing feature. Body is usually shiny grey, bronze or slightly bronze red depending on the time of year.



Red Drum Fillet

Scientific Name: Sciaenops Ocellatus

Type: Frozen

Packaging: IVP, 10kg

Size(s): 600/800, 800/1000, 1000/2000 grs/pc

Origin: Mauritius

Fully traceable, vertically integrated.

No vaccinations, no hormones, no additives.

Farm to processing at the same site.

Certifications: Halal, HACCP, Global GAP, Friends of the Sea, FDA approved.

SILVER FISH



Silver Fish

Scientific Name: *Salanx Chinensis*

Type: Frozen

Packaging: 20 x 1kg

Size(s): 8/10 - 10/12 cm/pc

Origin: China

MOLLUSC

Scallop
Clam
Oyster





SCALLOP



MOLLUSC



Half Shell Roe On Scallop

Scientific Name: *Patinopecten Yessoensis*

Type: Frozen

Packaging: IQF, 10 x 1kg

Size(s): 7/8 - 10/12 cm/pc

Origin: China



Scallop Adductor Roe Off

Scientific Name: *Patinopecten Yessoensis*

Type: Frozen

Packaging: IQF, 10 x 1kg

Size(s): 10/20 - 60/80 pcs/lb

Origin: China



SCALLOP



Scallop Adductor Roe Off

Scientific Name: *Ylistrum Balloti*

Type: Frozen

Packaging: Block, 6 x 2kg / IQF, 8 x 1kg / IQF, 20 x 300g

Size(s): 10/20 - 40/60 pcs/lb

Origin: Australia

Enjoyed by customers for more than 40 years, Far West Scallops are famous for their rich, sweet, slightly salty flavour and pleasantly firm texture.

Our Wild Caught Scallops, from the pristine waters of Western Australia, are now available in half shell and certified sustainable by the Marine Stewardship Council.





SCALLOP



Dried Scallop

Scientific Name: Patinopecten Yessoensis

Type: Dried

Packaging: 10 x 1kg

Size(s): 500 - 1500 pcs/kg

Origin: China



No preservatives or additives, single ingredient product.

Employ Japanese processing technique – naturally dried.

7x longer than usual dried scallop for a higher concentrate of natural sweetness.

Long processing time of 21 days.

CLAM



MOLLUSC



Top Shell Slice

Scientific Name: *Chicoreus Ramosus*

Type: Frozen

Packaging: 25 x 600g

Size(s): -

Origin: Taiwan



Atlantic Mirugai

Scientific Name: *Panopea Bitruncata*

Type: Frozen

Packaging: 70 x 200g

Size(s): -

Origin: Taiwan

Hint of sweetness and a nice chewy texture.

A versatile ingredient especially for soup.

Also known as the Atlantic geoduck clam, this seafood features a uniquely chewy texture and a mild, sweet flavor. It's best enjoyed as a topping for salads and Yu Sheng, or incorporated into Japanese dishes. Quick frying also enhances its delightful taste.

OYSTER



Oyster Meat

Scientific Name: *Crassostrea Gigas*

Type: Frozen

Packaging: IQF, 10 x 1kg

Size(s): S,M,L

Origin:

Individually quick frozen to maintain the high quality

Vacuum packed to prolong freshness

Great for oyster omelette, mee sua and oyster cake



CRUSTACEAN

Crab Meat
Soft Shell Crab



CRAB MEAT

Our crab meat comes in a variety of types: Colossal, Jumbo Lump, Super Lump, Claw. Sourced from the wild, each batch is hand-picked and pasteurized to ensure the highest quality and flavor. Enjoy the rich taste of our premium crab meat in your favorite dishes!



CRUSTACEAN



Ocean Best Crab Meat

Scientific Name: Portunus Haanii

Type: Pasteurized

Packaging: 12 x 454g

Size(s): Colossal, Jumbo Lump, Super Lump, Claw

Origin: China



Ocean Finest Crab Meat

Scientific Name: Portunus Haanii

Type: Pasteurized

Packaging: 12 x 454g

Size(s): Colossal, Jumbo Lump, Super Lump, Claw

Origin: China



A whole squid is the central focus, resting on a bed of crushed ice. To its left are several slices of lemon, one of which is garnished with a small sprig of green herb. Behind the squid, there are several pieces of garlic. The background is a dark, textured surface, possibly a stone or concrete countertop. The lighting is soft, highlighting the texture of the squid's skin and the ice.

CEPHALOPOD

Cuttlefish



CUTTLEFISH



Our Cuttlefish are sourced from Asian waters. Known for its tender and savory meat, Cuttlefish also has a subtly sweet taste and smooth texture. While it can be enjoyed raw, it's most often cooked to enhance its flavors.



Cuttlefish Fillet Flower Cut

Scientific Name: Sepia Lycidas

Type: Frozen

Packaging: IQF, 10 x 1kg

Size(s): 60/80, 80/120

Origin: Vietnam



Baby Cuttlefish

Scientific Name: Sepia Lycidas

Type: Frozen

Packaging: IQF, 10 x 1kg

Size(s): 20/40 - 60/80 pcs/kg

Origin: Asia



VALUE ADDED

Kabayaki
Broth & Oil



KABAYAKI



Kabayaki Squid

Scientific Name: *Uroteuthis Chinensis*

Type: Frozen

Packaging: 25 x 150g

Size(s): 150 grs/pc

Origin: Taiwan



Kabayaki Tilapia

Scientific Name: *Oreochromis Niloticus*

Type: Frozen

Packaging: 25 x 250g

Size(s): 50/60 grs/pc

Origin: Taiwan



BROTH & OIL



Lobster Broth

Scientific Name: Homarus Americanus

Type: Frozen

Packaging: 15 x 1kg

Size(s): -

Origin: Taiwan



Lobster Oil

Scientific Name: Homarus Americanus

Type: Frozen

Packaging: 15 x 1kg

Size(s): -

Origin: Taiwan



FUNCTIONAL FOOD

Bird's Nest
Chicken Essence
Fish Essence
Drinks



Square Bird's Nest

Scientific Name: *Aerodramus Fuciphagus*

Type: Dried

Packaging: 9 x 6g

Size(s): 6 grs/pc

Origin: Vietnam



Rose Bird's Nest

Scientific Name: *Aerodramus Fuciphagus*

Type: Dried

Packaging: 10 x 3.6g

Size(s): 3.6 grs/pc

Origin: Vietnam



BIRD'S NEST

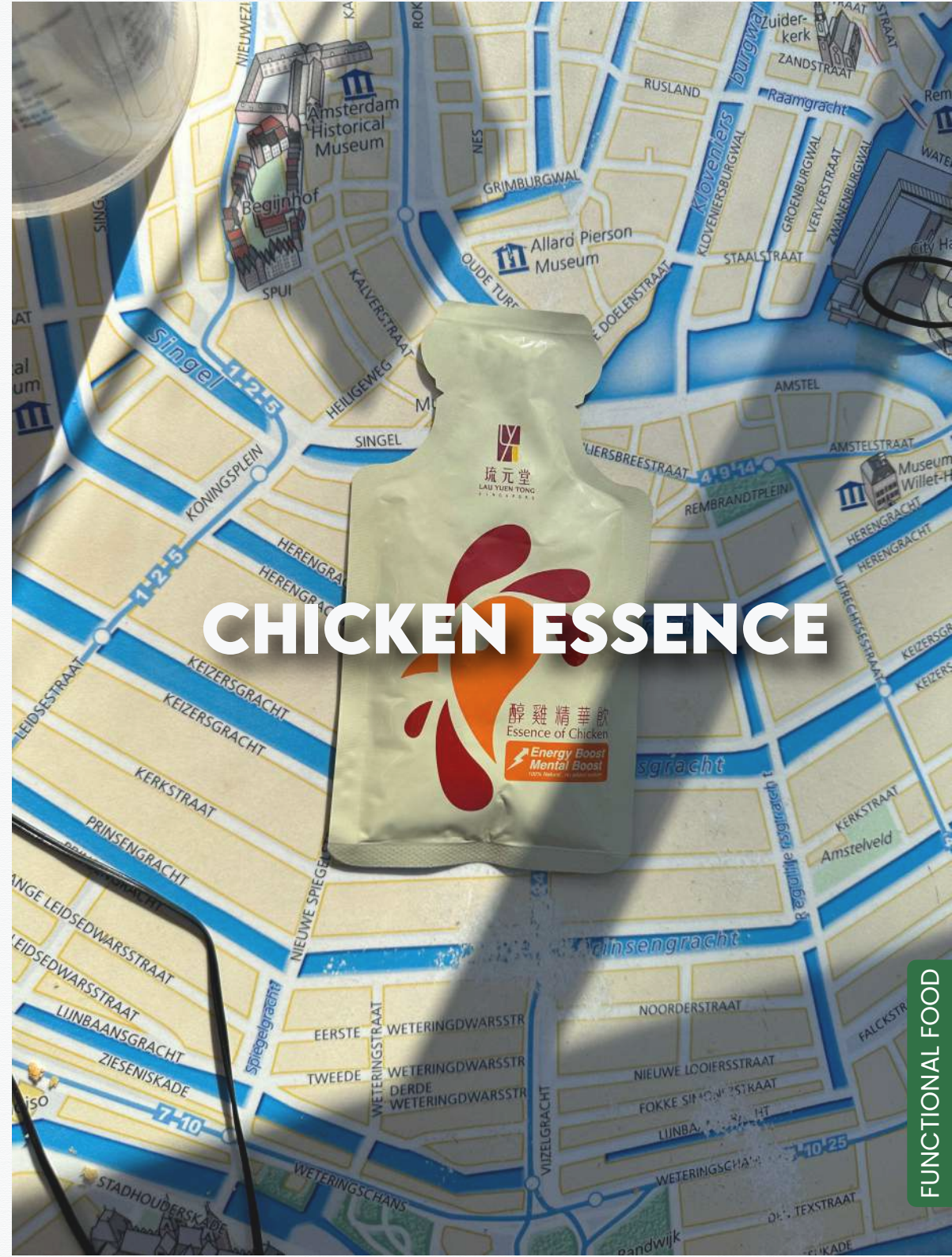
Our proudest innovation in enabling a hassle-free way to prepare your bird nest. Through our dedication to R&D, we took away the trouble of soaking and cleaning the impurities. You can now enjoy a bowl of comforting bird's nest the way you like it in 30 minutes!

All you have to do is to put a token in boiling water, together with any other ingredients you like. Stew for 30 minutes and...Voila! You are good to go.



Lau Yuen Tong Chicken Essence

Type: Ambient
Packaging: 7 x 55ml
Size(s): 55 ml/pkt
Origin: Taiwan



CHICKEN ESSENCE

FUNCTIONAL FOOD



Milkfish Essence

Type: Ambient

Packaging: 15 x 60ml

Size(s): 60 ml/pkt

Origin: Taiwan



FISH ESSENCE



DRINKS



Rooibos Tea

Scientific Name: Aspalathus Linearis

Type: Ambient

Packaging: 20 x 20g

Size(s): 20 grs/pkt

Origin: South Africa



1002 Tai Seng Ave #01-2552 Singapore 534409

Tel: +65 6747 9701 | WhatsApp: +65 8318 5586

info@hongseafood.com

www.hongseafood.com